



INSIDE THIS ISSUE:

<i>Meet the team</i>	1
<i>Charity toy appeal</i>	1
<i>Short story winner</i>	2
<i>Amnesty</i>	2
<i>Christmas movies</i>	2
<i>New staff interview</i>	3
<i>What does Christmas mean to me?</i>	3
<i>Yr 9 winning Christmas playlist</i>	3
<i>Chocolate Yule Log recipe demonstration</i>	4
<i>Keeping you and your property safe at Christmas</i>	4

Special points of interest:

- Year 9 Winning Christmas playlist-click the QR code
- Christmas recipe Shimna students video link
- Christmas safety

MEET THE PUBLICATIONS TEAM

Message from the editor:

My name is **Matthew Millar** and I am the editor of our first ever School Magazine.

To the right is a picture of the whole publishing team. We have enjoyed putting this special Christmas edition together for you and we hope you enjoy reading it.

We aim to create a full scale magazine by the end of the year and have it printed. We cordially invite you to share any suggestions you might have for publications over the



Back Row: (left to right) Matthew Millar, Ryan Kearney, Ronan Fitzpatrick, Ben Mc Laughlin, Anna Young and Doone Vos,

Front Row:(left to right) Olivia Blaney, Shreyash Wanhade, Saoirse Cassidy-Dawson, Alice Fitzpatrick

course of the year and will receive feedback gratefully.

We held our first publications poll last week to choose a name and as you can see **"Shimna Scoop"** won. Thank you for your

support. Wishing you all a very Merry Christmas and a very happy New Year!

- Publications Team.

CHARITY TOY APPEAL

Some of our brilliant students in 13M took it upon themselves to begin a collection within the school to raise money for the local St Vincent De Paul branch. They collected

over £200 which they spent on toys and Tesco vouchers. These can now be used to help those in need at Christmas



**Why does
Santa work
at the North
Pole?**

**Because the
penguins
kicked him out
of the South
Pole.**

*"Once again, the
Amnesty group want to
express their gratitude
to all the staff and
students who have given
so generously to the food
bank. "*

A Recipe for
a Christmas
Tree

Start off with a big
green tree
Then sprinkle over some
fairy lights

Crumble on a bowl of
baubles

Then leave to the side
for a few hours

Next get some tinsel and
beat it for a few
minutes

Then sprinkle on mix
them and add a star.

Serve with presents and
a happy family.

Sophie McCullough 8D

HALLOWEEN SHORT STORY COMPETITION WINNER

At first Anna thought nothing of it, she went to sleep the night of her birthday with the doll she had got as a present in her arms and when she woke up it was on the floor. To Anna this wasn't strange; she assumed it fell out of her arms and out of bed as she rolled over in the night, as

any child would.

The night she started to notice other things was a stormy one a couple days after her birthday. She had gone to sleep with the doll in her arms as usual but woke up and it was not on the floor. It was sitting up in the hallway leaning against the wall. It was strange but as the day went on it slipped her mind.



By Jessica Waddell

The next night the doll was on the stairs, and the next at the bottom of the stairs. That's when it didn't start to slip her mind and she told her mother, "Mum, I think my doll is alive." But her mother laughed in Anna's face and said "Wow sweetie! Can she talk?"

Anna knew her mum wouldn't believe her.

That night she went to sleep as usual, doll in arms and woke to the doll on the floor but this time, all her other toys ripped up, teddy fluff everywhere, Barbie heads scattered but the doll just lying in the middle, untouched. Anna was very scared at this point and even decided to throw the doll away. But by morning, the doll was in Anna's cold arms and when Anna's mum went to wake her up, the only other living thing in the room was the doll.

AMNESTY REVERSE ADVENT CALENDAR

Good morning all,

Once again, the Amnesty group want to express their gratitude to all the staff and students who have given so generously to the food bank. We are delighted to play a part in helping families during this difficult time. Pictured is only the

contents of boxes that have already been filled by form classes, contributions from staff and donations to the front office – and we know that there is so much more out there in the school!

Thank you all again!



CHRISTMAS MOVIES

BY ALICE FITZPATRICK & OLIVIA BLANEY

As it gets closer to that time of year again, we need some festive movies that can get us into the Christmas spirit. Haven't got any ideas? Don't worry, we've got you covered. Here are the top Christmas movies according to... us.

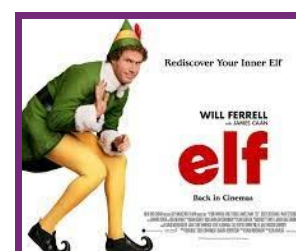
- Elf
- Home alone 2
- Home Alone

Coming off strongly with our top three movies if I do say so myself. We have the Home Alone films – brilliant music, brilliant story line, pretty brilliant if you ask me.

And, of course, we have Elf, starring the magnificent and hilarious Will Ferrell playing a baby- human- turned- full grown -man- elf called Buddy. In my opinion, it is a must watch, especially on Christmas Eve night.

Christmas with an edge:

- E.T
- Gremlins



Elf – a must watch this Christmas

NEW STAFF MEMBER INTERVIEW BY EOIN MILLEN

Eoin: Hello it is good to meet you. Could you give our readers a brief introduction about yourself?

Holly: Heya, I'm Holly! I'm working here doing sub work for teachers and helping Roberta in the office.

Eoin: What brought you to Shimna?

Holly: I have always wanted to work in a school and just wanted a different type of job really.

Eoin: Is Shimna the first college/school you have worked in? if not what's the primary difference?

Holly: Shimna is the first I've worked in but coming from the hotel business, I just wanted a change of career, working with adults was very different from young people.

Eoin: Do you have any wacky winter holiday traditions?

Holly: I personally don't have any wacky traditions but my family jumps from the harbour on Christmas Day! I usually just watch.

Eoin: Do you have any controversial Christmas opinion?

Holly: I don't agree with Santa buying all the expensive gifts, save some big gifts for birthdays!

Eoin: What is your favourite Christmas movie?

Holly: My favourite Christmas movie is Elf because I love Will Ferrell.



Festive Art from Art Club



WHAT DOES CHRISTMAS MEAN TO ME?



Christmas means celebrating the birth of Jesus. I am a Christian and my faith is very

important to me. On Christmas Day my family and I attend the Carol Service on Christmas Day at our local church. We sing carols and give thanks to Jesus for His blessings and all He has done for us.

My family is much like the

rest of you in that Santa still visits our house on Christmas eve. It is also good to buy presents for family members to show how much we care for each other.

I hope everyone has a very happy Christmas.

By S.N. Year 12

"My family is much like the rest of you in that Santa still visits our house on Christmas eve."

YR 9 WINNING CHRISTMAS PLAYLIST-SCAN THE QR CODE!

Some Books!

Christmas is a magical time, which is why (we think) fantasy books are perfect for this time of year to give ya that extra magical feeling. These books are on the most part YA and are prettyyy good.

Some of our current reads are:

- The Cruel Prince Series
- The Shatter Me Series
- Lord of the Rings

•Twilight

•The Selection Series

And a Christmas book that is on both our TBR'S is 'My True Love Gave To Me' written by twelve different authors -some of who you've probably heard of - including Jenny Han, author of 'The Summer I Turned Pretty' series and 'To All The Boys I've Loved Before' series. It's worth giving it a go! Now, click the QR code for the winning Yr 9

Christmas playlist. Give 'em a listen and a sing to- I promise it's worth it.



What kind of photos do elves take?

Elflies!

Prince's Trust



Washington D.C Fundraiser



Chocolate Yule Log recipe demonstration By Ellie Cunningham & Anna O'Flaherty Year 13

CHOCOLATE YULE LOG

Ingredients	Equipment
For the chocolate sponge <ul style="list-style-type: none"> 4 large eggs 100g caster sugar 65g self-raising flour 40g cocoa powder For the chocolate ganache topping <ul style="list-style-type: none"> 300ml double cream 300g dark chocolate broken into small pieces For the cream filling <ul style="list-style-type: none"> 300ml double cream, whipped To decorate <ul style="list-style-type: none"> icing sugar, for dusting a toy robin or sprig of holly 	Equipment <ul style="list-style-type: none"> Greaseproof paper Swiss roll tin Weighing scales Large bowl Electric hand whisk Sieve Spatula Oven gloves Knife Serving Plate Palette Knife Fork

Preheat the oven to 200C/400F/Gas 6. Lightly grease a 33x23cm/13x9in Swiss roll tin, and line with non-stick paper or baking parchment, pushing it into the corners.

- For the sponge, in a large bowl whisk the eggs and sugar using an electric hand whisk until the mixture is pale in colour, light and frothy.
- Sift the flour and cocoa powder into the bowl and carefully cut and fold together, using a spatula, until all the cocoa and flour are incorporated into the egg mixture. (Be careful not to beat any of the air out of the mixture).
- Pour the mixture into the lined tin.
- Tilt the tin to make sure the mixture is spread evenly out into the corners.
- Using oven gloves bake in the middle of the preheated oven for 8-10 minutes, or until well risen and firm to the touch and the sides are shrinking away from the edge of the tin.
- Place a piece of baking parchment bigger than the Swiss roll tin on the work surface. Dust with icing sugar generously. Carefully turn the cake onto the paper and remove the bottom lining piece of paper.
- Cut a score mark 2.5cm along one of the longer edges (don't cut through the cake)
- Starting with this edge, begin to tightly roll up the sponge using the paper. Roll with the paper inside and sit the roll-on top of its outside edge to cool completely.
- While the cake is cooling, make the ganache topping. Heat the cream in a pan, just so as you can keep your finger in it. Remove from the heat and add the chocolate, stirring until it is melted. Cool to room temperature, then put into the fridge to firm up.
- Unroll the cold Swiss roll and remove the paper. Spread the whipped cream on top, and re-roll tightly. Cut a quarter of the cake off from the end on the diagonal. Transfer the large piece of cake to a serving plate and angle the cut end into the middle of the large cake to make a branch.
- Using a palette knife spread the cover the cake in chocolate so it looks like the bark of a tree.
- Create rough bark texture with a fork.
- Dust with icing sugar and garnish with fresh holly or a little robin to serve.



CLICK the recipe above to see the girls in full festive action preparing this delicious Christmas favourite.

**Keeping you
and your
property safe
at Christmas
While you're out
shopping... so
are they!**



Stay safe this festive season!

At this time of year many of us are thinking about getting out buying presents for our friends and family. Christmas shopping can either be fun or a major stress. Before you make your plans though, think how you can make your valuables safe while you are out.

- When you go out, ensure any presents are not visible from outside your home.

- Considering taking simple measures like

marking valuables with your postcode and house number and the best place to store expensive gifts can help prevent a burglary in your home.

- When you're out, make sure your bag, purse or wallet are somewhere safe and be careful at ATMs.

Try not to leave parcels and presents in your car and always lock it.

Paul Ferguson

**What do snowmen
eat for lunch?**

**Iceburgers with
chilly sauce!**

